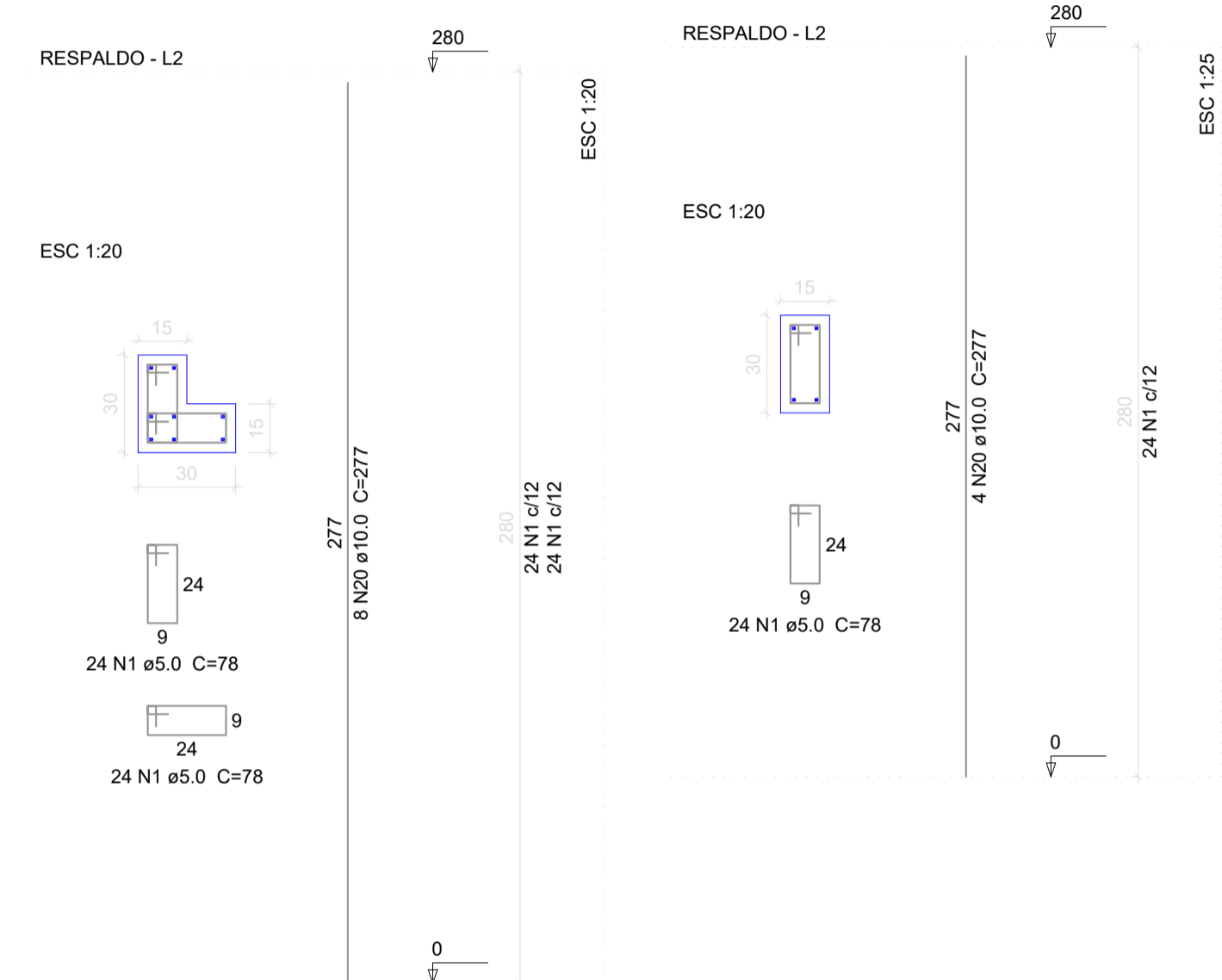


P1=P5=P6=P10

P3=P8



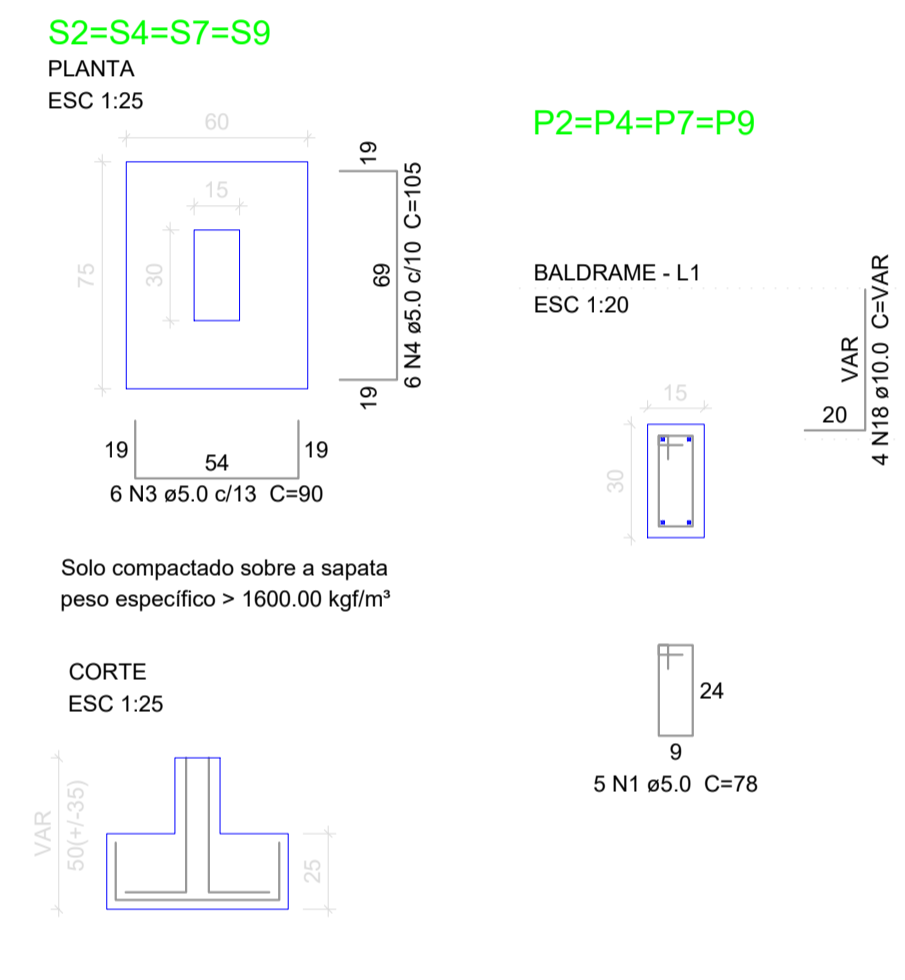
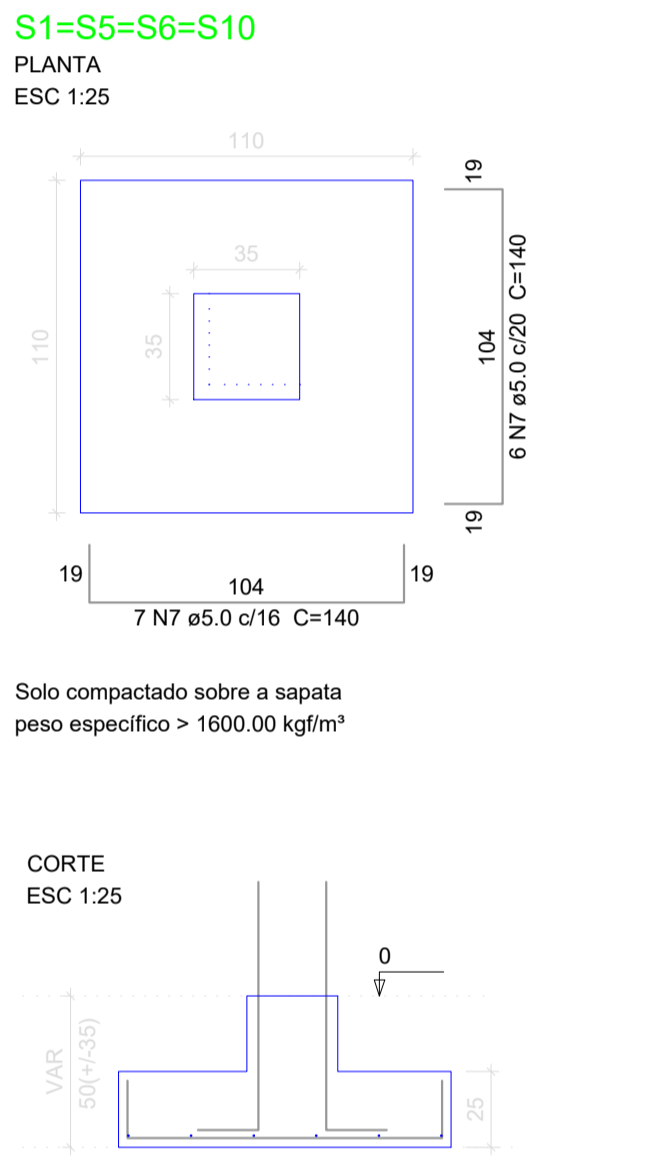
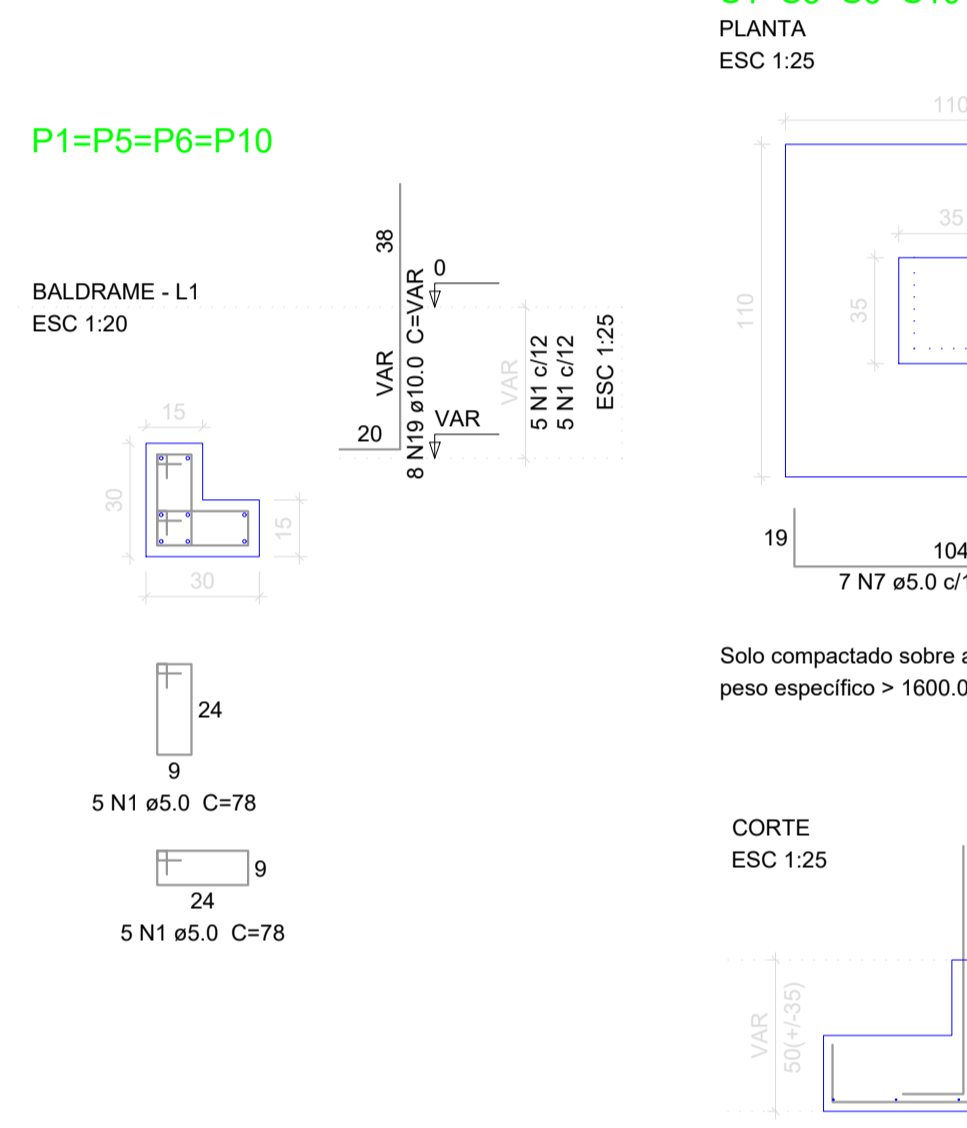
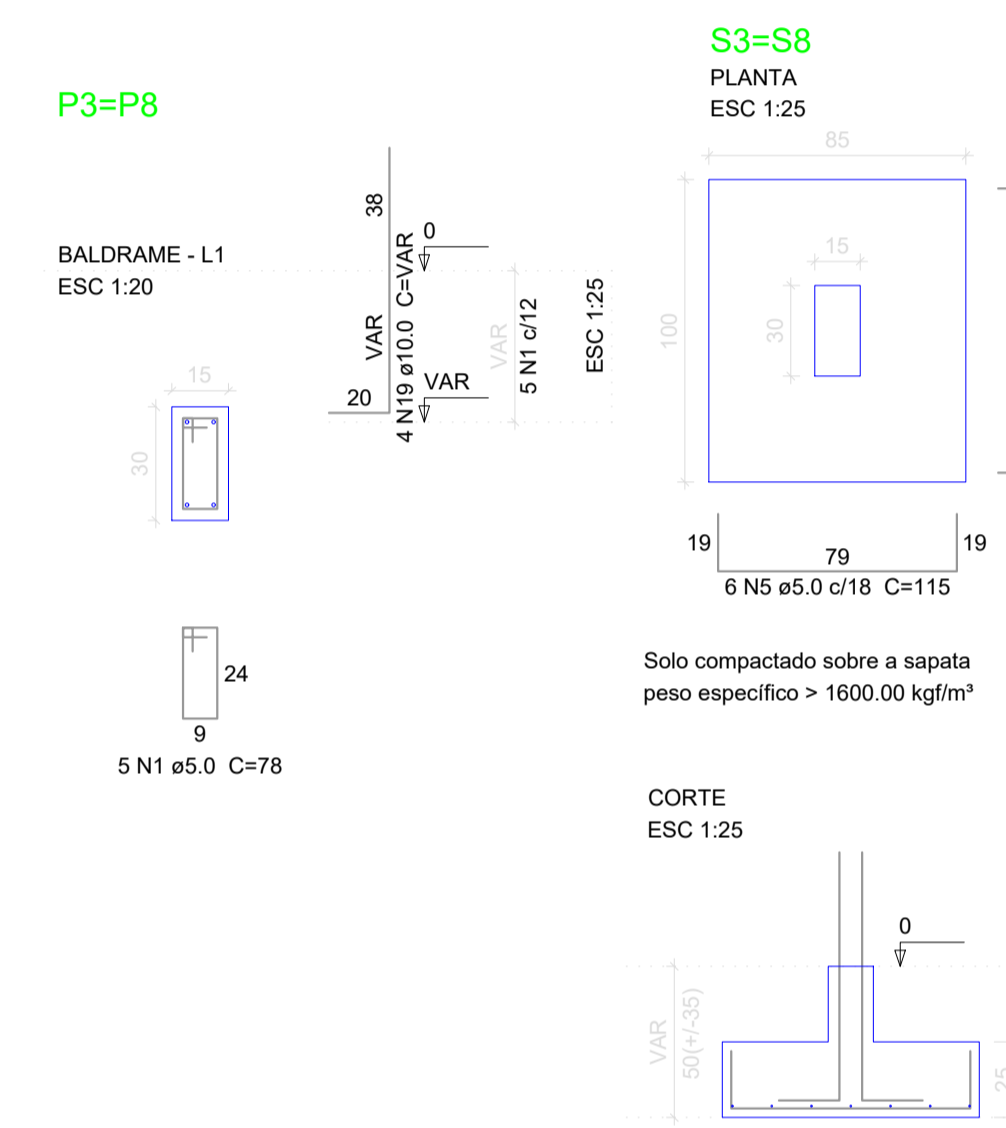
**Relação do aço**

BAI	DIAM	Q	UNIT (cm)	C.TOTAL (cm)
CA60	1	5.0	956	74568
	2	5.0	4	920
	3	5.0	24	2160
	4	5.0	24	2520
	5	5.0	12	1360
	6	5.0	14	1820
	7	5.0	52	7280
	8	5.0	8	3008
	9	8.0	16	13056
CA50	10	8.0	4	4792
	11	8.0	4	2020
	12	8.0	12	7488
	13	8.0	8	1800
	14	8.0	6	3960
	15	8.0	8	2512
	16	8.0	4	1800
	17	8.0	2	662
	18	10.0	16	10112
	19	10.0	40	27720
	20	10.0	40	27720

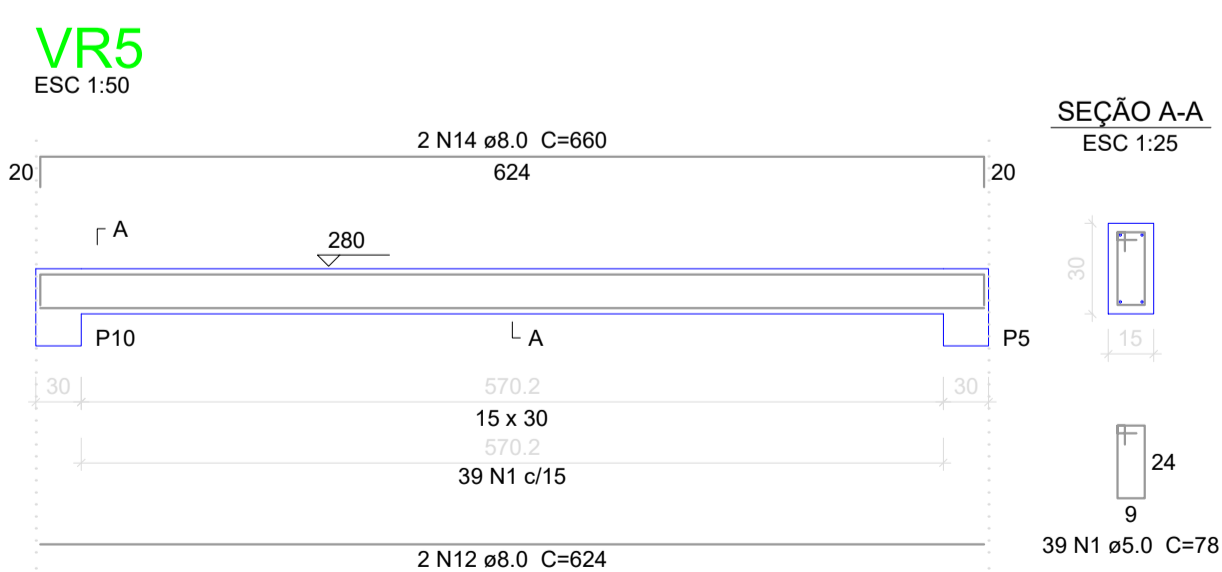
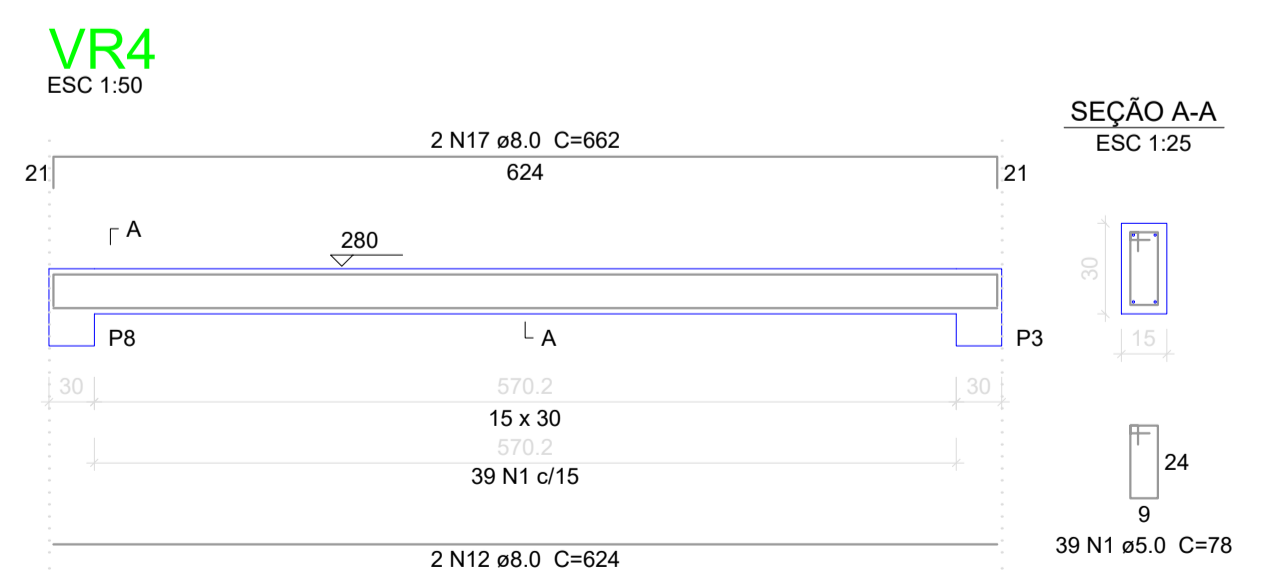
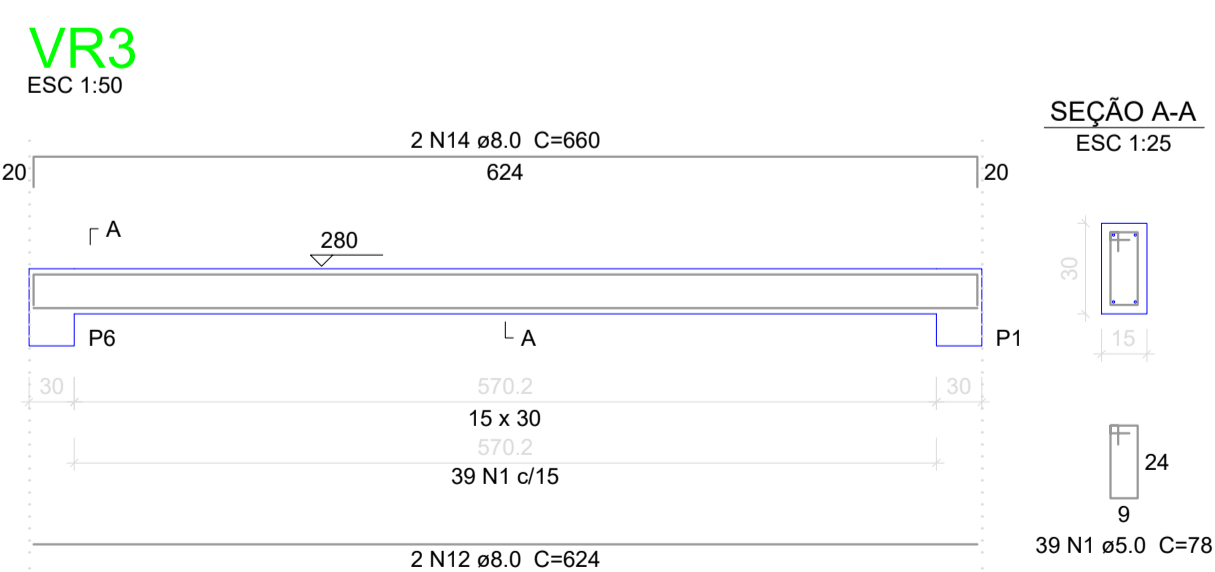
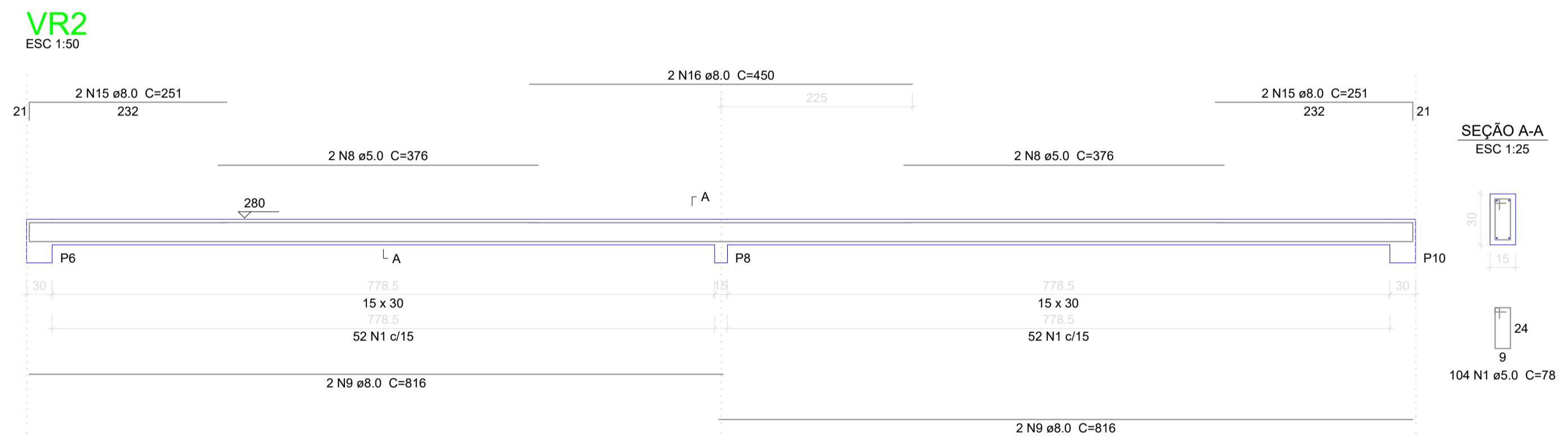
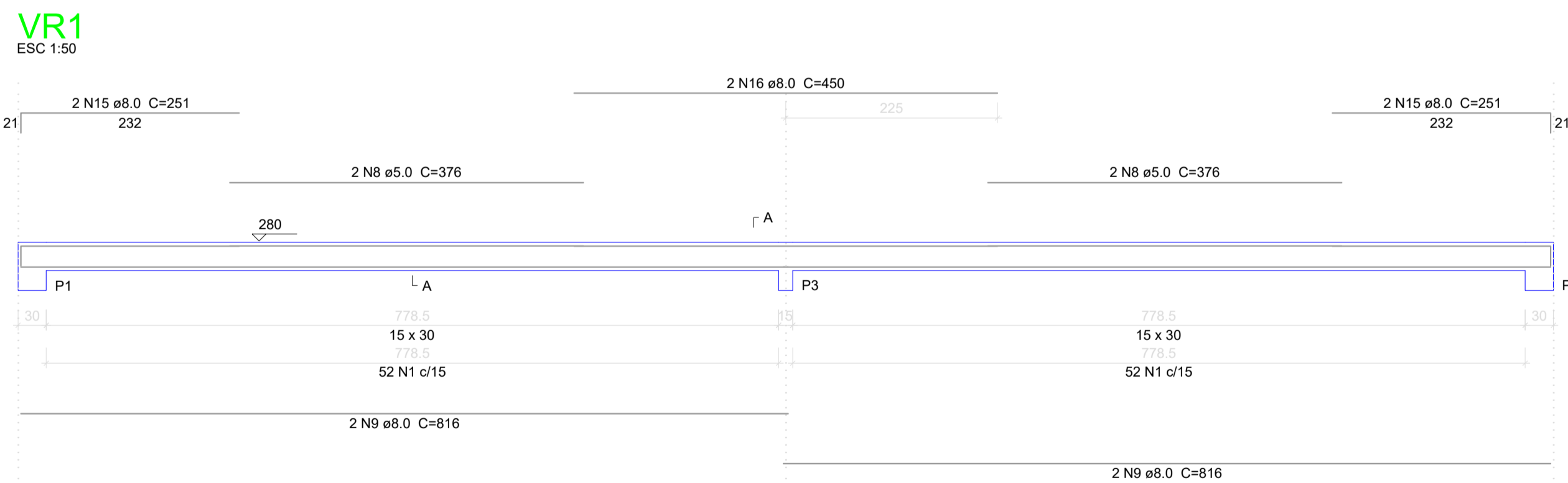
**Resumo do aço**

AÇO	DIAM	C.TOTAL (m)	PESO (kg)
CA50	8.0	382.5	151
CA60	5.0	936.6	144
<b>PESO TOTAL</b>			
CA50		252	
CA60		144	

Vol. de concreto total (C-25) = 8 m³  
Área de forma total = 109.85 m²



P2=P4=P7=P9



Revisões da Prancha			
	Comentários	Autor	Data
01	Revisão Geral	Fábio	26/07/2018

**PREFEITURA MUNICIPAL DE PLANALTO**

AMPLIAÇÃO E REFORMA ESCOLA MUNICIPAL NOSSA SENHORA DE FÁTIMA  
PROJETO ESTRUTURAL  
LOTE 03 QUADRA 06, DISTRITO DE CENTRO NOVO, PLANALTO, - PARANÁ.

RESPONSÁVEL TÉCNICO: **FABIO SABINO**  
CREPAR: 141165-D  
ENGENHEIRO CIVIL

Área de Intervenção: 137,44 m²  
ESCALA: Indicada  
DATA: 26/Jul/2018

LOCALIDADE/BARRIO: DISTRITO DE CENTRO NOVO  
PREFEITO MUNICIPAL

FOLHA: **ESTR. 02/02**